



## Main Features:-

- ◆ 3 Way Reduced Bore Ball Valve
- ◆ 1/4" to 2 1/2" PN63
- ◆ "T" Ball configuration
- ◆ Working Temperature -25 to +180C \*
- ◆ Max. Working pressure 63 bar

\*Temperature and pressure determined by valve body, seat etc.

## Suitable Applications & Approvals:



HVAC



OIL



GAS



INDUSTRY

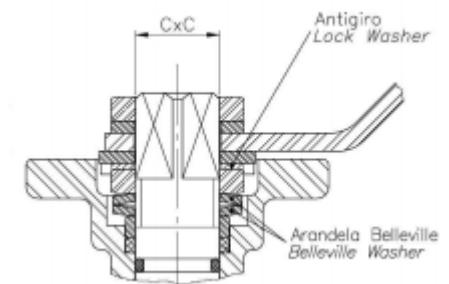
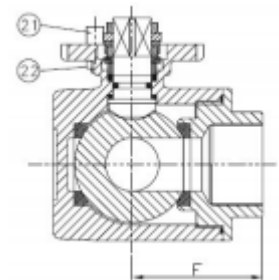
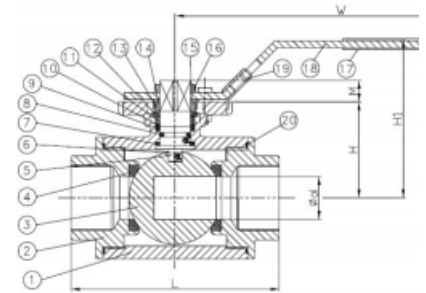


## SERIES: 80028

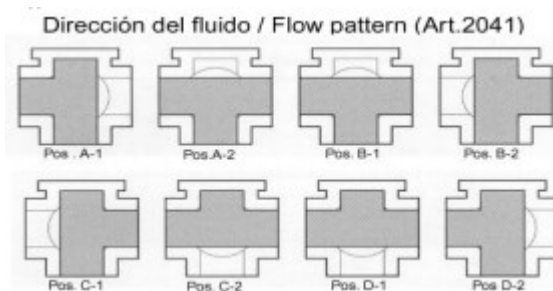
MANUFACTURER: **GENEBRE**

VALVE MATERIALS & DIMENSIONS

ITEM	SECTION	MATERIAL	ADDITIONAL INFO / OPTIONS
1	Body	SS 1.4408	Shot Blasting + Pickling
2	Cap	SS 1.4408	Shot Blasting + Pickling
3	Ball	SS 1.4408	Spare Part Code 2840
4	Ball Seat	PTFE+15% FG	Spare Part Code 2819
5	Stem	SS 316	n/a
6	Anti-Static device	SS 316	n/a
7	Trust Washer	PTFE	Spare Part Code 2819
8	O'Ring	FKM	Spare Part Code 2819
9	Stem Packing	PTFE	Spare Part Code 2819
10	Bushing	SS + PTFE	n/a
11	Gland	SS 304	n/a
12	Spring Washer	SS 301	n/a
20	Gasket	PTFE	Spare Part Number 2819
21	Stop Bolt	SS 304	n/a



## Flow Patterns for " T-PORT " 3 way valves 90° turn



T +44 (0)1386 552369

E sales@allvalves.co.uk

W www.allvalves.co.uk

F +44 (0)1386



Genebre are a global brand of industrial valves with large stocks held for fast delivery on various type of valves, sizes, end connections and materials.

## SERIES: 80028

TORQUE / Kv VALUES / PRESSURE & TEMP CHART

REF	SIZE	PN	d	L	H	H1	W	M	F	CxC	ISO 5211	KG
80028-02	1/4"	63	9.5	75	37	66	130	8	37	9x9	F03/F04	0.7
80028-03	3/8"	63	11	75	37	66	130	8	37	9x9	F03/F04	0.67
80028-04	1/2"	63	12	75	37	66	130	8	37	9x9	F03/F04	0.63
80028-05	3/4"	63	15	85	41	72	161	12	42	11x11	F04/F05	0.95
80028-06	1"	63	20	100	47	77	161	12	50	11x11	F04/F05	1.4
80028-07	1 1/4"	63	25	122	56	92	203	12	61	14x14	F05/F07	2.9
80028-08	1 1/2"	63	32	131	60	96	203	12	65	14x14	F05/F07	3.6
80028-09	2"	63	40	158	71	107	203	12	79	14x14	F05/F07	6.25
80028-10	2 1/2"	63	49	178	95	135	254	14	89	17x17	F07/F10	8.95

REF	SIZE	TORQUE Nm	REF	SIZE	Kv	TORQUE :
80028-02	1/4"	8	80028-02	1/4"	11	<p>- The liquid listed in the table are initial breakaway torques, taken with liquids and lubricant media.</p> <p>- Please regard these as approximate values, as the objective value on different factors like pressure, medium, rubber</p>
80028-03	3/8"	8	80028-03	3/8"	11	
80028-04	1/2"	8	80028-04	1/2"	13	
80028-05	3/4"	9	80028-05	3/4"	15	
80028-06	1"	18	80028-06	1"	31	
80028-07	1 1/4"	21	80028-07	1 1/4"	39	
80028-08	1 1/2"	26	80028-08	1 1/2"	62	
80028-09	2"	36	80028-09	2"	103	
80028-10	2 1/2"	55	80028-10	2 1/2"	205	

### GENEBRE

Genebre is a leading company and world reference in fluid control and high-quality taps. They control all the creation processes, responding to the specific needs of each market: from the initial concept and design of the product to the production and commercialization.

